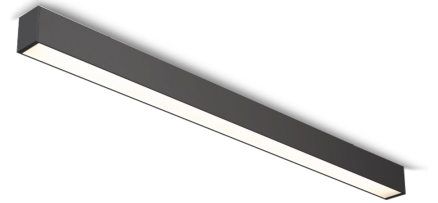


Technical datasheet

BASICSUR-1200-840-2-PD-BL

Product description

Basic linear led luminaire for offices, meeting rooms, corridors and households.

LED 220-240 V IP20   CCT CRI
 50-60 Hz 4000 k 80+

Product technical data

| | | | |
|-----------------------|------------------------|----------------------------|---------------|
| Mains voltage | 220 - 240V AC, 50/60Hz | Optical system | Diffuser |
| Connection method | Plug-in terminal | Optical part material | PC |
| Dimming type | DALI | Housing material | Aluminium |
| IP rating | 20 | Surface finish | Powder coated |
| Protection class | I | Width | 50.00 cm |
| Ambient temperature | 0 to +25 °C | Height | 70.00 cm |
| Light source | LED | Length | 1,200.00 cm |
| Colour temperature | 4000k | Weight | 1.70 kg |
| Color rendering index | 80 | Service lifetime (L80 B30) | 50 000 h |
| Rated luminous flux | 3,182 lm | Warranty | 3 years |
| Connected load | 26.60 W | | |
| Luminous efficacy | 119.6 lm/W | | |

Dimensions



l 1200 mm
w 50 mm
h 73 mm

Light distribution

