

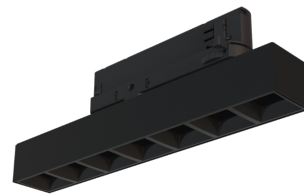
Technical datasheet

WORCOM-S-935-1-50-BL



Product description

Worker Compact is a modern track LED luminaire for 3-phase system with LED source with 50,000 hours lifetime. Available in 3 power options, wide range of color temperatures (2700K-4000K) with CRI 80+/90+. Five light distribution types (50°, 80°, ASYM, SYM, WAS) and DALI control option available. Uses the most modern LED technology for powerful and economical lighting. Ideal for offices, corridors and retail spaces. 5-year warranty.

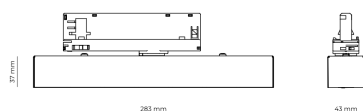


LED 220-240 V 50-60 Hz **IP20**   **UGR < 19** **CCT 3500 k** **CRI 90+**

Product technical data

Mains voltage	220 - 240V AC, 50/60Hz	Ripple	5 %
Connection method	3-phase track adapter	Inrush current	17 A
Dimming type	Non-dimmable	Inrush time	172 µs
IP rating	20	Optical system	Lenses
Protection class	II	Optical part material	PMMA
Ambient temperature	0 to +25 °C	Surface finish	Powder coated
Light source	LED	Width	43.00 cm
Colour temperature	3500k	Height	37.00 cm
Color rendering index	90	Length	283.00 cm
Rated luminous flux	888 lm	Weight	0.45 kg
Connected load	9.42 W	Service lifetime (L80 B10)	50 000 h
Luminous efficacy	94.3 lm/W	Warranty	5 years

Dimensions



Light distribution

