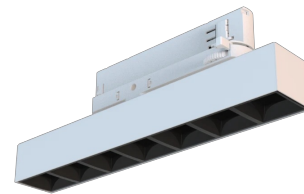


# Technical datasheet

## WORCOM-S-927-1-WAS-WH

### Product description

Worker Compact is a modern track LED luminaire for 3-phase system with LED source with 50,000 hours lifetime. Available in 3 power options, wide range of color temperatures (2700K-4000K) with CRI 80+/90+. Five light distribution types (50°, 80°, ASYM, SYM, WAS) and DALI control option available. Uses the most modern LED technology for powerful and economical lighting. Ideal for offices, corridors and retail spaces. 5-year warranty.

**LED** 220-240 V 50-60Hz **IP20**  **CE** **UGR < 19** **CCT 2700 K** **CRI 90+**

### Product technical data

**Mains voltage** 220 - 240V AC, 50/60Hz  
**Connection method** 3-phase track adapter  
**Dimming type** Non-dimmable

**IP rating** 20  
**Protection class** II  
**Ambient temperature** 0 to +25 °C

**Light source** LED  
**Colour temperature** 2700k  
**Color rendering index** 90  
**Rated luminous flux** 725 lm  
**Connected load** 9.42 W  
**Luminous efficacy** 77.0 lm/W

**Ripple** 5 %  
**Inrush current** 17 A  
**Inrush time** 172 μs  
**Optical system** Lenses  
**Optical part material** PMMA  
**Surface finish** Powder coated

**Width** 43.00 cm  
**Height** 37.00 cm  
**Length** 283.00 cm  
**Weight** 0.45 kg

**Service lifetime (L80 B10)** 50 000 h  
**Warranty** 5 years

### Dimensions



### Light distribution

