

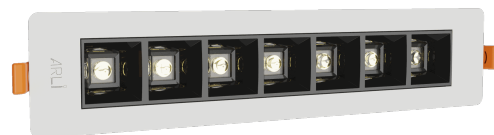
Technical datasheet

WOR-M-940-2-SYM-WH



Product description

Modern recessed lamp with excellent lighting properties. Suitable for lighting offices, corridors and design spaces. The lamp uses the most modern LED technology, which makes the lamp powerful and economical.



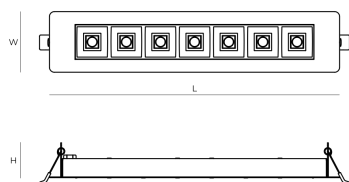
LED 220-240V 50-60Hz **IP20**    **UGR < 19** **CCT 4000 k** **CRI 90+** **DIMM Push** 

Product technical data

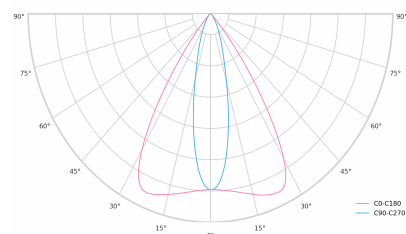
Mains voltage	220 - 240V AC, 50/60Hz
Connection method	Screw terminal
Dimming type	DALI
IP rating	20
Protection class	II
Ambient temperature	0 to +25 °C
Light source	LED
Colour temperature	4000k
Color rendering index	90
Rated luminous flux	935 lm
Connected load	11.15 W
Luminous efficacy	83.9 lm/W

Ripple	3 %
DALI address	1
Inrush current	4 A
Inrush time	46 µs
Optical system	Lenses
Optical part material	PMMA
Housing material	Steel
Surface finish	Powder coated
Width	71.00 cm
Height	41.00 cm
Length	340.00 cm
Weight	0.75 kg
Service lifetime (L80 B10)	50 000 h
Warranty	5 years

Dimensions



Light distribution



DALI 2

DALI (Digital Addressable Lighting Interface) is an international standard for digital lighting control systems. It enables individual control of each luminaire in the network using digital signals - unlike traditional analog solutions.

Key DALI2 innovations:

- Advanced diagnostic capabilities
- Better fault reporting and device status
- Enhanced scene programming options
- Support for RGB/RGBW and tunable white