

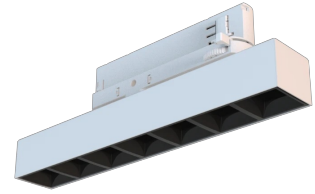
Technical datasheet

WORCOM-M-830-1-ASYM-WH



Product description

Worker Compact is a modern track LED luminaire for 3-phase system with LED source with 50,000 hours lifetime. Available in 3 power options, wide range of color temperatures (2700K-4000K) with CRI 80+/90+. Five light distribution types (50°, 80°, ASYM, SYM, WAS) and DALI control option available. Uses the most modern LED technology for powerful and economical lighting. Ideal for offices, corridors and retail spaces. 5-year warranty.



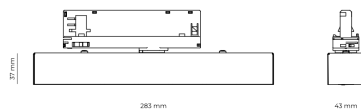
LED 220-240 V 50-60Hz **IP20**  **CE** **UGR < 19** **CCT 3000 K** **CRI 80+**

Product technical data

| | |
|-----------------------|------------------------|
| Mains voltage | 220 - 240V AC, 50/60Hz |
| Connection method | 3-phase track adapter |
| Dimming type | Non-dimmable |
| IP rating | 20 |
| Protection class | II |
| Ambient temperature | 0 to +25 °C |
| Light source | LED |
| Colour temperature | 3000k |
| Color rendering index | 80 |
| Rated luminous flux | 1,151 lm |
| Connected load | 13.16 W |
| Luminous efficacy | 87.4 lm/W |

| | |
|----------------------------|---------------|
| Ripple | 5 % |
| Inrush current | 17 A |
| Inrush time | 172 μs |
| Optical system | Lenses |
| Optical part material | PMMA |
| Surface finish | Powder coated |
| Width | 43.00 cm |
| Height | 37.00 cm |
| Length | 283.00 cm |
| Weight | 0.45 kg |
| Service lifetime (L80 B10) | 50 000 h |
| Warranty | 5 years |

Dimensions



Light distribution

