

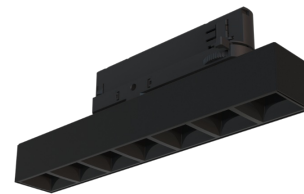
Technical datasheet

WORCOM-L-927-1-50-BL



Product description

Worker Compact is a modern track LED luminaire for 3-phase system with LED source with 50,000 hours lifetime. Available in 3 power options, wide range of color temperatures (2700K-4000K) with CRI 80+/90+. Five light distribution types (50°, 80°, ASYM, SYM, WAS) and DALI control option available. Uses the most modern LED technology for powerful and economical lighting. Ideal for offices, corridors and retail spaces. 5-year warranty.



LED 220-240 V 50-60 Hz
IP20


UGR < 19
CCT 2700 K
CRI 90+

Product technical data

Mains voltage 220 - 240V AC, 50/60Hz
Connection method 3-phase track adapter
Dimming type Non-dimmable

IP rating 20
Protection class II
Ambient temperature 0 to +25 °C

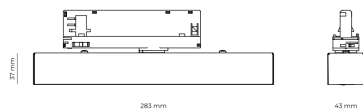
Light source LED
Colour temperature 2700k
Color rendering index 90
Rated luminous flux 1,124 lm
Connected load 13.97 W
Luminous efficacy 80.5 lm/W

Ripple 5 %
Inrush current 17 A
Inrush time 172 μs
Optical system Lenses
Optical part material PMMA
Surface finish Powder coated

Width 43.00 cm
Height 37.00 cm
Length 284.00 cm
Weight 0.45 kg

Service lifetime (L80 B10) 50 000 h
Warranty 5 years

Dimensions



Light distribution

